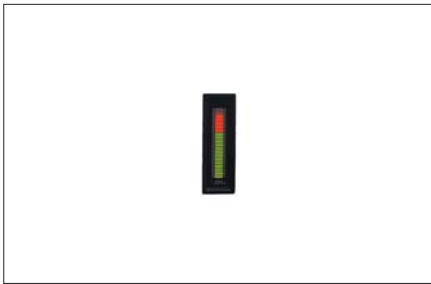


## OMB 20



- **Bi-colour LED 1 x 20**
- **0...2/5/10 V**
- **0...5/20 mA, 4...20 mA**
- **Size of DIN 72 x 24 mm**
- **Power supply 7...32 V DC/AC**

### Description

The OMB 20 model is a panel bargraph with one bi-colour column of 20-segment LED.

For its dimensions it is suitable for mosaic panels mounting applications.

### Operation

The instrument is designed for simple measurement without further control. Selection of colour projection is set by shorting links inside the instrument.

### Calibration

Projection for maximum value of input signal is adjustable by potentiometer at the terminal board, offset (zero shifting) may be set by shorting links inside the instrument.

## Technical data

MEASURING RANGE	Impedance/Max.drop
0...5 mA	< 260 mV
0...20 mA	< 260 mV
4...20 mA	< 260 mV
0...2 V	1 MOhm
0...5 V	1 MOhm
0...10 V	1 MOhm

### PROJECTION

Display: 1x 20 LED, red - green  
display colour is adjustable by shorting links inside the instrument

### INSTRUMENT ACCURACY

Tempco: 100 ppm/°C  
Accuracy: ±1 % of range  
Overload capacity: 10x (t < 100 ms), 2x (long-term)  
Calibration: at 25°C and 40 % r.h.

### POWER SUPPLY

7...32 V DC/AC, max. 180 mA, with galvanic separation

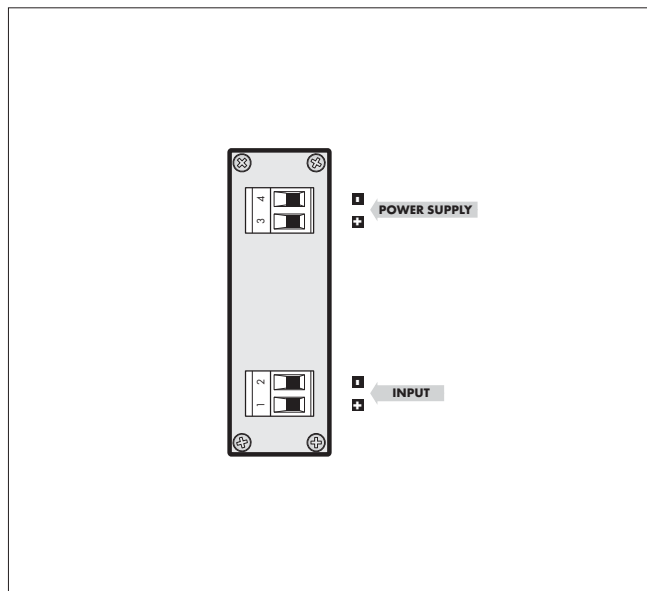
### MECHANIC PROPERTIES

Material: Noryl GFN2 SE1, incombustible UL 94 V-I  
Dimensions: 72 x 24 x 100 mm  
Panel cut-out: 68 x 22,5 mm

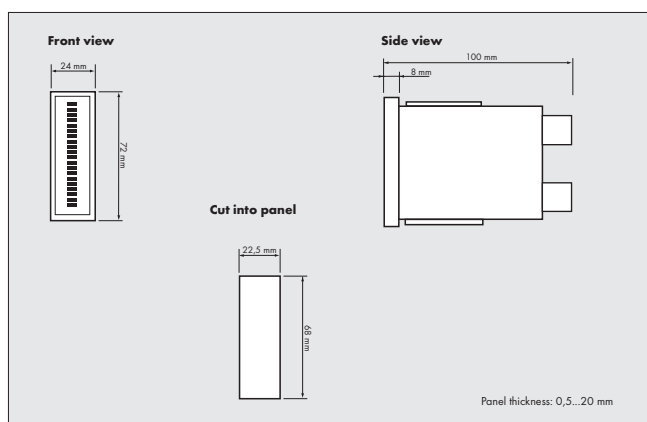
### OPERATING CONDITIONS

Connection: connector terminal board, conductor section up to 2,5 mm<sup>2</sup>  
Stabilization period: within 15 minutes after switch-on  
Working temperature: 0°...60°C  
Storage temperature: -10°...85°C  
Covering: IP40 (front panel only)  
Electrical safety: EN 61010-1, A2  
Overvoltage category: for pollution degree II  
II. - instrument power supply, input (300 V)

## Connection



## Dimensions



## Order code

