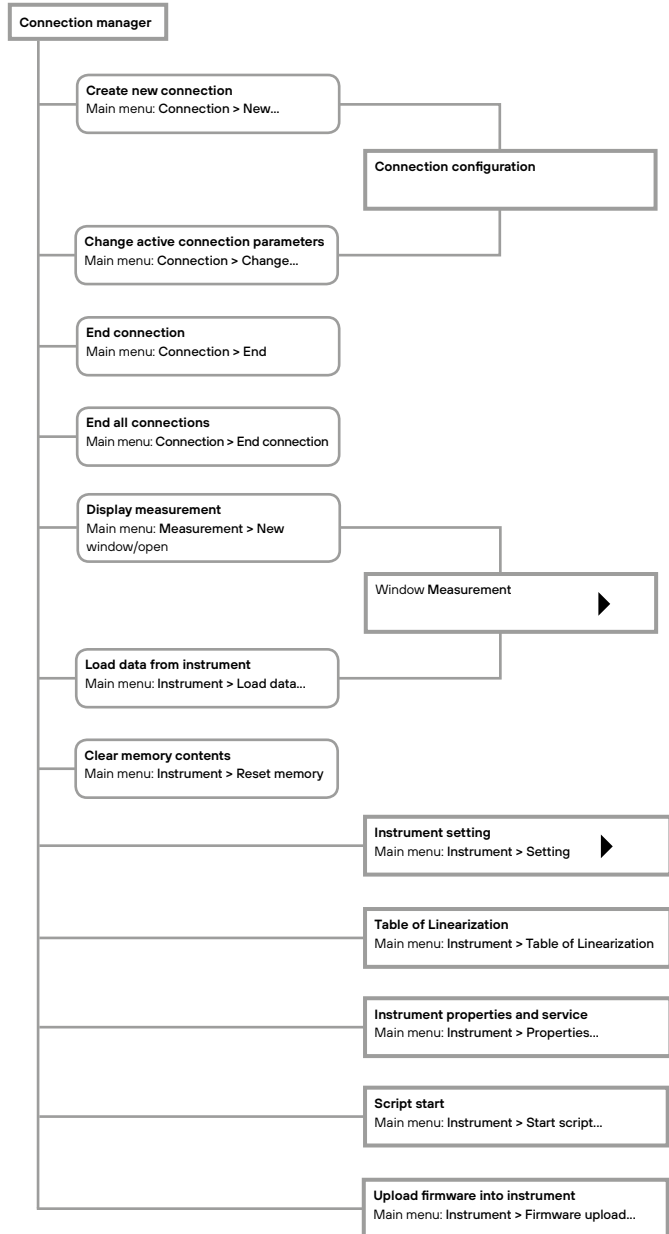
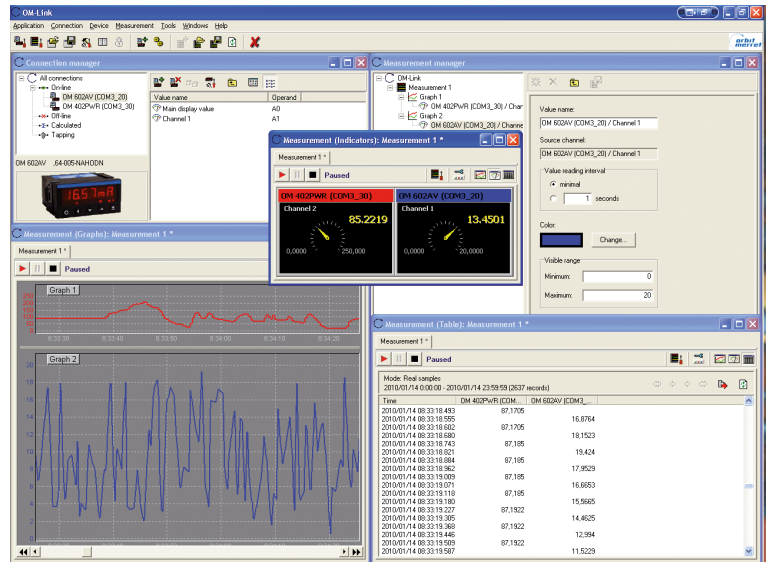




The program OM Link is designed for easy configuration, operation, firm-ware upgrade of instruments and converters and for visualization of the measuring process. The new ORBIT MERRET instruments include the OM Link interface in their standard features. To connect to PC an OML cable is required (version USB or RS232).

The program may be used for configuration (1 instrument) or data collection via RS 232 and RS 485 line, more suitable for on-line connection during operation.



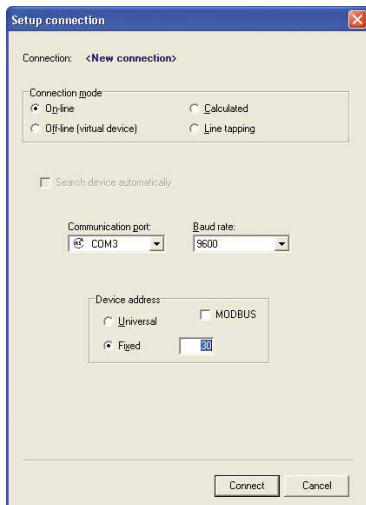
## CONNECTION MANAGER

Connection manager facilitates creating and cancelling connections, provides their list classified as per Type, noting the basic parameters and measureable values (channels), and serves as home location for starting measurements, configuring the OM instruments, projecting their properties etc.

Connection is the key entity of the OM link application - it represents physical or virtual connection with an OM device and is the basic subject of many application functions.

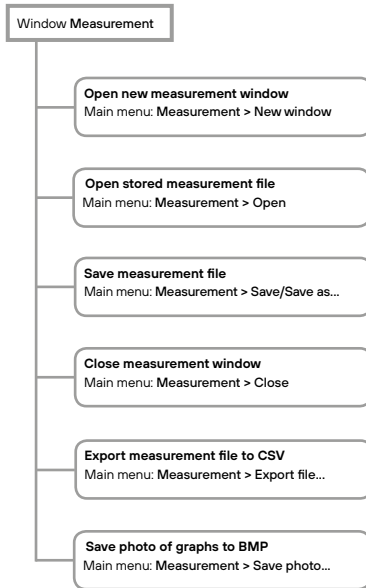
Connection modes:

- **On-line**, represents a physical connection to an OM device.
- **Off-line**, serves for projection of instrument menu and its configuration for later use in the on-line mode.
- **Mathematic**, represents a mathematical operation with measured data acquired from other connections (on-line)
- **Line tapping**, serves to analyse communication in progress among autonomous measuring systems



## MEASUREMENT MANAGER

Measurement manager facilitates creating and cancelling measurement files, graphs and individual data, provides their structured overview and enables modification of graph and value parameters.



## WINDOW MEASUREMENT

Window Measurement provides view of historic and current process of measuring certain quantities and their groups. The window offers three possible modes of viewing the measured data:

- 1) graphs – they reflect the historic course of measurement in selectable time Range. By means of the control panel in this mode it is possible to shift the displayed time period, modify the displayed time Range (from 1 sec up to 15 days) and set additional parameters of graph projection, (names, date on time axis).
- 2) Indicators – they show current values of the measured data
- 3) Table – depicts the history of the measuring process in table numeric format.

By means of the control panel in this mode it is possible to switch between the projection of interpolated values in particular time steps and the projection of truly taken sample values.

The graph and table modes also enable to discontinue the measurement in process and restart it again. At the same time it is also possible to specify whether upon restarting the process the measurement retains its former course (history) and the measurement is reassumed or whether it starts anew and the history is cancelled. Values from the instrument may be added to the measurement e.g. from the Connection manager by selecting certain instrument channel from the on-line connection (or calculated connection or line tapping connection) and dragging it over to the Window Measurement. This way new values (quantities) may also be incorporated in already existing graphs (in case of graph mode), i.e. two quantities in one graph with common standard and time axis.

Time	OM 402PWR (COM3_30) / Channel 1	OM 602MV (COM3_20) / Channel 2
2010/01/14 08:33:18.453	87,1705	16,8764
2010/01/14 08:33:18.602	87,1705	16,8764
2010/01/14 08:33:18.800	87,1705	16,8764
2010/01/14 08:33:18.743	87,185	19,424
2010/01/14 08:33:18.821	87,185	17,9529
2010/01/14 08:33:18.984	87,185	16,6653
2010/01/14 08:33:19.071	87,185	15,5665
2010/01/14 08:33:19.118	87,185	14,4625
2010/01/14 08:33:19.100	87,1922	12,994
2010/01/14 08:33:19.227	87,1922	11,5229
2010/01/14 08:33:19.305	87,1922	9,69108
2010/01/14 08:33:19.369	87,1922	7,68325
2010/01/14 08:33:19.446	87,1922	5,67563
2010/01/14 08:33:19.509	87,1973	3,28257
2010/01/14 08:33:19.567	87,1973	1,049
2010/01/14 08:33:19.634	87,1973	14,3593
2010/01/14 08:33:19.696	87,1824	6,5317
2010/01/14 08:33:19.805	87,1824	7,95916
2010/01/14 08:33:19.822	87,1824	9,39384
2010/01/14 08:33:19.915	87,1824	11,049
2010/01/14 08:33:19.977	87,1761	12,8123
2010/01/14 08:33:20.055	87,1761	14,3593
2010/01/14 08:33:20.119	87,1761	13,2676
2010/01/14 08:33:20.196		
2010/01/14 08:33:20.259		
2010/01/14 08:33:20.321		
2010/01/14 08:33:20.389		
2010/01/14 08:33:20.438		
2010/01/14 08:33:20.477		
2010/01/14 08:33:20.540		
2010/01/14 08:33:20.727		
2010/01/14 08:33:20.957		
2010/01/14 08:33:20.655		
2010/01/14 08:33:20.727		
2010/01/14 08:33:20.855		
2010/01/14 08:33:20.869		
2010/01/14 08:33:20.946		
2010/01/14 08:33:20.993		
2010/01/14 08:33:21.055		
2010/01/14 08:33:21.102		
2010/01/14 08:33:21.145		

Structuring the quantities and graphs and changing their parameters (names, ranges, colors) may also be performed in Measurement Manager.

## DEVICE SETUP

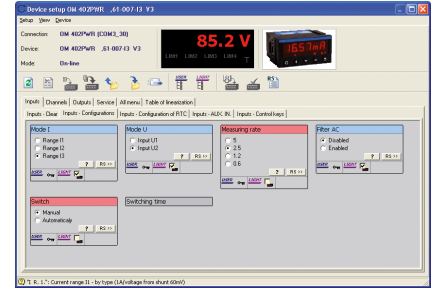
One of the main features of the OM Link program is the opportunity to set up the instruments comfortably from your computer.

- Setting the device values and parameters
- View of the complete setting menu (PROFI/LIGHT/USER)
- Individual configuration of the complete menu
- Device setup export and import

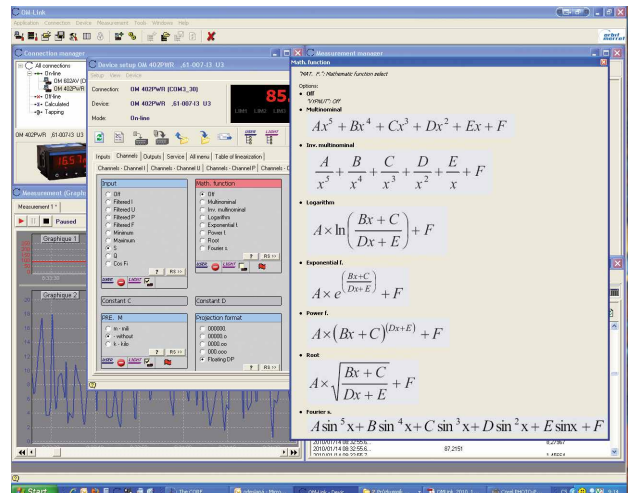
All existing items may be set, even those that are inaccessible or blocked in the instrument.

In majority of the items on the instrument menu their attribute may be set for the "User menu" (see/change/ hide) and in addition it is possible to remove or add any item from the "LIGHT menu". Client menu of the instrument may be compiled eventually this way for given application and level of service proficiency.

Each setting of the device-menu may be stored in a file and used for configuration of other instruments. An advantage is also the possibility of sending complete menu via e-mail directly to the technical support of the manufacturer.



In Properties and Service you will find complete information about the instrument



Properties   Service	
Comm. port:	COM3
Baud rate:	9600
Comm. status:	Active
Device address:	30
Identification:	OM 402PWR_01-007-13_U3
2nd chip ID:	
Sign:	KZaha
Product number:	060707026
Program checksum:	
Date checksum:	
Lock-item access count:	
Configuration:	
Analog output:	No
Data output:	RS-485
RTC clock:	No
Flash memory:	not present
Counters:	
Switch counter:	890
Hours-on counter:	7079
Internal counter 1:	62
Internal counter 2:	8792
Internal counter 3:	8832

