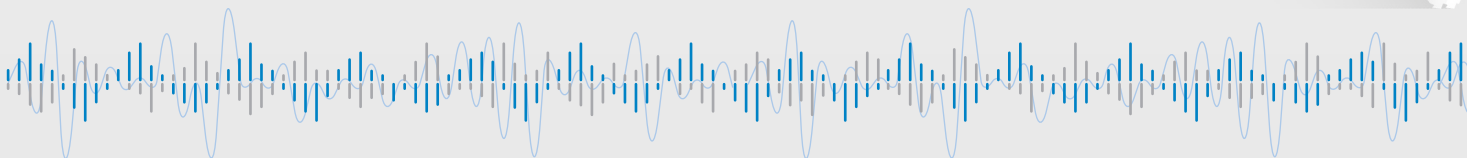


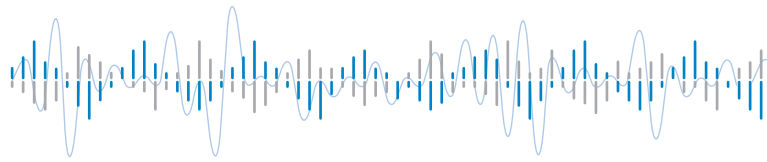


*... outstanding measurement value*

## OMT 1010

ON-LINE  
SUPERVISION AND MONITORING  
OF THE STATE OF YOUR SHIPMENTS





EXCEEDING

# OMT 1010

## ON-LINE SURVEILLANCE AND MONITORING OF THE STATE OF YOUR SHIPMENTS

- RECORDING FROM DIFFERENT SENSORS
- STORAGE INTO CLOUD DATABASE
- DATA DISPLAY IN REAL TIME
- STORAGE INTO INTERNAL MEMORY
- BATTERY LIFE UP TO 3 MONTHS

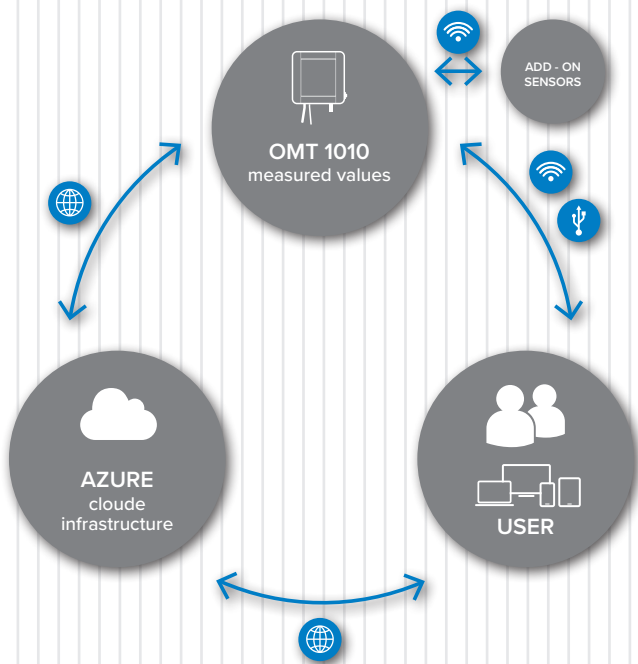


### START OF TRANSPORT MONITORING

Start	Argentina
Destination	Australia
Shipment No.	485DR7845/18
Loading	12/02/2018
Time	03/01/2018 ● 13:22:54



Device communication scheme



### DEVICE

**OMT 1010** is a device for monitoring and recording of data during transport of goods, driving tests or tests of handling units. In a clear web application you'll have, under your account, a detailed overview of your shipment, and then it's up to you what you want to know about it.

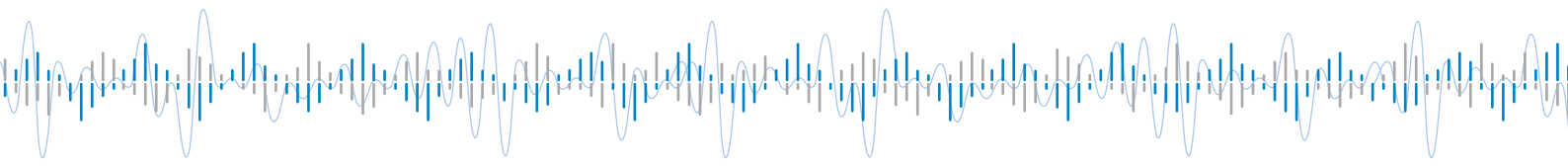
Monitored shipment parameters:

Geographical position, course, speed, altitude, temperature, humidity, dew point, air pressure, intensity and colour of light, sunshine, tilt, g-force, magnetic field, concentration of CO and other gases.

Trouble-free data transfer to the superior system is ensured by a global quad band GSM/GPRS module. If the unit is out of signal range, the measured data are stored in the internal memory. They are sent at the moment of re-accessing the signal. If uninterrupted supervision is necessary, we can offer a unit with an Iridium satellite network connection.

The battery capacity ensures reliable operation for up to 3 months. The battery can be easily recharged just by plugging the unit into the USB port of your PC.





### ONGOING OBSERVED VALUES

Status X-axis g-force has been exceeded by +0,4G  
 Location 50.3024, 12.9474  
 Time 29/01/2018, 23:15:08

### SHIPMENT REACHED DESTINATION

Destination Australia  
 Time 13/02/2018 • 11:10:34  
 Shipment No. 485DR7845/18



### CONTROL

For user communication with OMT 1010, a Microsoft Azure web application is used to enable a convenient and well-arranged tracking of all your orders in real time. All configurable settings are accessible from the PC application. From mobile and web applications, it is possible to quickly access the collected data with the possibility of changing the supervised parameters.

Monitored parameters can be set separately for each available sensor, both for exceeding the minimum and the maximum, as well as for reaching a certain position or meeting specific conditions from multiple sensors. Recording and measurement parameters can easily be entered in applications. It's possible to clearly display measured data in maps, charts, and to browse report excerpts from your device.

In addition, you can configure and calibrate individual sensors and device parameters from the PC application. In applications, you can activate the user account system and set the management of different devices by roles.

Mobile application will be available on Android, iOS, and Windows platforms.

### SERVICES

The device is delivered configured for a particular mode of transport or according to the user's requirements. The settings can be remotely modified during shipping.

The OMT 1010 is delivered in a form of leasing, which enables you to take advantage of its professional functions without the need to purchase the hardware.

A team of professionals, who take care of the operation and the device setup, will ensure that you get the data in an understandable form and at a time when this information is important.

You can effectively manage the supply chain or project without having to download data, take care of batteries and other settings.

You can be informed about the monitored parameters by SMS, e-mail or directly by a data transfer to your system.

Upon completion of a particular shipment, you will receive a report for evaluation, archiving, or contact with the carrier or insurance company.

***...with us you have your goods under control!***

## STANDARD FUNCTIONS

### Built-in sensors measure the following variables

Inclination, g-force, geographical position, temperature, humidity, concentration of CO, Acetone, Ethanol, Ethane and Isoprene, atmospheric pressure, air quality, magnetic field, speed, course, altitude, intensity and colour of ambient light in the visible and infrared spectrum in lux.

### Communication with the device via

USB, TCP/IP via GPRS, Bluetooth 3 and 4; equipped with an M2M SIM card with the option of adding a classic micro SIM.

### Data recording

Main memory up to 4Gb for a real-time sample storage, secondary 3x backed-up memory with low-consumption for extended parameter storage.

### Functional modes

Goods control mode with data storage only when specified parameters are exceeded, which is suitable for long-term measurements. Test mode, in which all the measured samples are stored, is used for analyses of various events, for example, testing tension of the binding devices or stability of the handling units.

### Battery charging

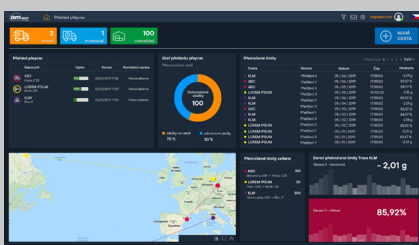
Li-ion battery with up to three months battery life, charging via USB from PC or 5V/1A power supply. The device can only be operated from USB power supply.

IP67 protection against dust and moisture but with a sufficient passage to the sensors.

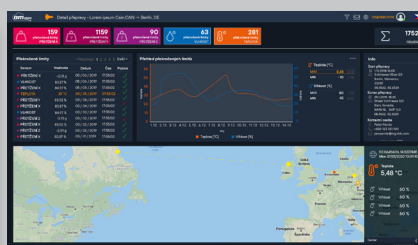
## TECHNICAL DATA

Sensors	
Thermometer	-40°...+120°C, ±0.4°C
Hygrometer	0...100%, ±2%
Accelerometer	-16...+16G, ±90 mG
Gyroscope	-2000...+2000dps, ±30dps
Magnetometer	-16...+16 gauss, ±1 gauss
Barometer	10...1200 mbar ±1,5 mbar
Multi-GNSS	GPS, GLONASS, Galileo, QZSS
Light sensor	intensity of ambient light + RGB,IR Dynamic range 18.000.000:1
Gases	0...60000 ppb TVOC CO, Acetone, Ethanol, Ethane, Isoprene
Altitude	-9999.9...17999.9 m
Course	0...359.9°
Speed	0...1800 km/h
Connection	
GSM module	Global, Quad-band 850/900/1800/1900 MHz internal and external antenna (SMA - IP68)
GPRS class 12	< 85.6 kbps (downlink), < 85.6 kbps (uplink) internal and external antenna (SMA - IP68)
Bluetooth	Bluetooth 3 (SPP/HFP-AG) Bluetooth 4 (GATT/PXP/FMP profiles)
Power supply	
Battery	3.7 V / 13.8Ah
Charging	5 V / 1A via micro USB connector
Mechanic properties	
Material	plastic ABS + sintered steel cap
Dimensions	150 x 135 x 55 mm (w x h x d)
Assembly	2 covered fixing holes for attaching by screws or magnets
Operating conditions	
Stabilization period	within 5 minutes after battery connection
Working temperature	-30°...+85°C
Storage temperature	-30°...+85°C
Protection	IP67

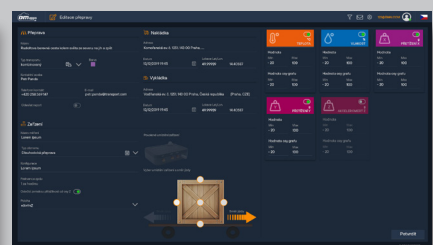
## PROGRAM WINDOW



Dashboard



Sensor setting



Trip preview