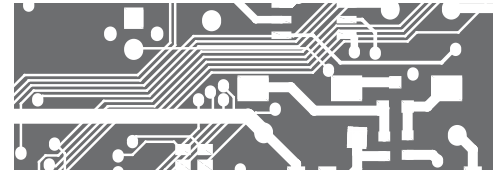


# OMC 8101-5DI.RS

2x RS 485 + 1x RS 485/RS 232 + 5x DIGITAL INPUTS



## CONNECTING THE MODULE


Prior to wiring the module to the power supply, always make sure the power supply is switched off

1. Connect module **OMC 8101-5DI.RS** to the main module using an included connector cable (female connectors are located at the top of the module housing and protected by a circular rubber plug)
2. Switch on the power supply of the whole system
3. Assign an address to the newly connected module (see Edit Modules setting below)
4. Switch off the power supply of the whole system

## ENTERING THE MENU OF OMC 8000

Instrument's menu can be entered in two different ways:

1. By pressing the **OK** key while the screen which lists the connected modules is displayed and hold it for the entire duration of its projection. Alternatively the **OK** key can be kept pressed already from the moment of Power-on.
2. By pressing the **UP** and **DOWN** keys simultaneously for 3 seconds (Arrow Up and Arrow Down) provided the PLC program is not running (LED RUN is not on). Only in this way the menu item Start can be accessed.

		<b>OMC 8000</b>
		192.168.1.48
		12.04.16 14:22:45
Language		English
Password		****
Quick start		No
Block debug		No
Autorecovery		Yes
RTC		
Display		
<b>Edit modules</b>		
Reread modules		
Ethernet		

## EDIT MODULES SETTING

This menu item allows assigning addresses to connected modules. In case there is no module connected, the screen is empty.

Changes realized in this setting are executed immediately. Pressing the **ESC** key does not mean the setting has not been already saved.


Keys **UP/DOWN** are used to select the module which is to be assigned. **LED RUN** flashes on the momentarily selected module.

Pressing the **OK** key activates the module to be assigned. The module's details are shown in inverse colors on the display.

**UP/DOWN** keys rank the module into the desired position in the list.

The **OK** button Unhighlights the module.

**ESC** key terminates the process of assigning addresses.

		<b>OMC 8000</b>
		192.168.1.48
		12.04.16 14:23:14
<b>1 8101.5DI.RS</b>		<b>120160313012</b>
2 8100.SM		120160409024
3 8100.SM		120160409025
4 8100.SM		120160409026

## RE-READ MODULES SETTING

Resets the table of modules and reads it again.

The rest is as described above.

# OMC 8101-5DI.RS

## TECHNICAL DATA

### DATA INPUTS

Number	4
Type	Line 0 RS 485, isolated Line 1 RS 485, isolated Line 2 RS 485, isolated - along with Line 3 Line 3 RS 232, isolated - along with Line 2
Protocol	ASCII - Master ASCII - Slave MODBUS RTU - Master MODBUS RTU - Slave Universal - Master
Rate	600...230 400 Baud
RS 485 termination	by connector jumper (internal resistance of 120 Ohm)
LED signalisation	yes

### DIGITAL INPUTS

Number	5
Range	12...250 V AC/DC
Level - Log. 0	< 1,5 V
Level - Log. 1	> 12 V
Max. current	2,5 mA
Response time	typically 4 ms
LED signalisation	yes

### TECHNICAL SPECIFICATION

TC	50 ppm/°C
Task	1 ms
Communication	CANBUS with speed of 1 Mbit/at 40 meters
Watch-dog	reset after 500 ms
Calibration	at 25°C and 40 % r.h.

### POWER SUPPLY

Power supply	via bus
Consumption	max. 330 mA

### MECHANICAL PROPERTIES

Material	PA 66, incombustible IUL 94 V-0, blue
Dimensions	36 x 91 x 60 mm
Mechanical fixation	on DIN rail 35 mm wide

### OPERATING CONDITIONS

Connection	screw terminals, cross section < 2,5 mm <sup>2</sup>
Operating temperature	-20°...60°C
Storage temperature	-20°...85°C
IP rating	IP20
Execution	Safety class I
El. safety	EN 61010-1, A2
Dielectric strength	2,5 kVAC for 1 min. between power/bus and inputs/outputs
Isolation resistance	for pollution degree II, measuring cat III 300 V (PI), 150 (DI)
EMC	EN 61326-1 (Industrial environment)
Seismic capacity	IEC 980: 1993, art.6

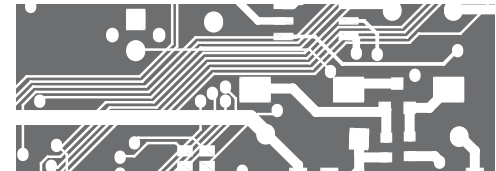
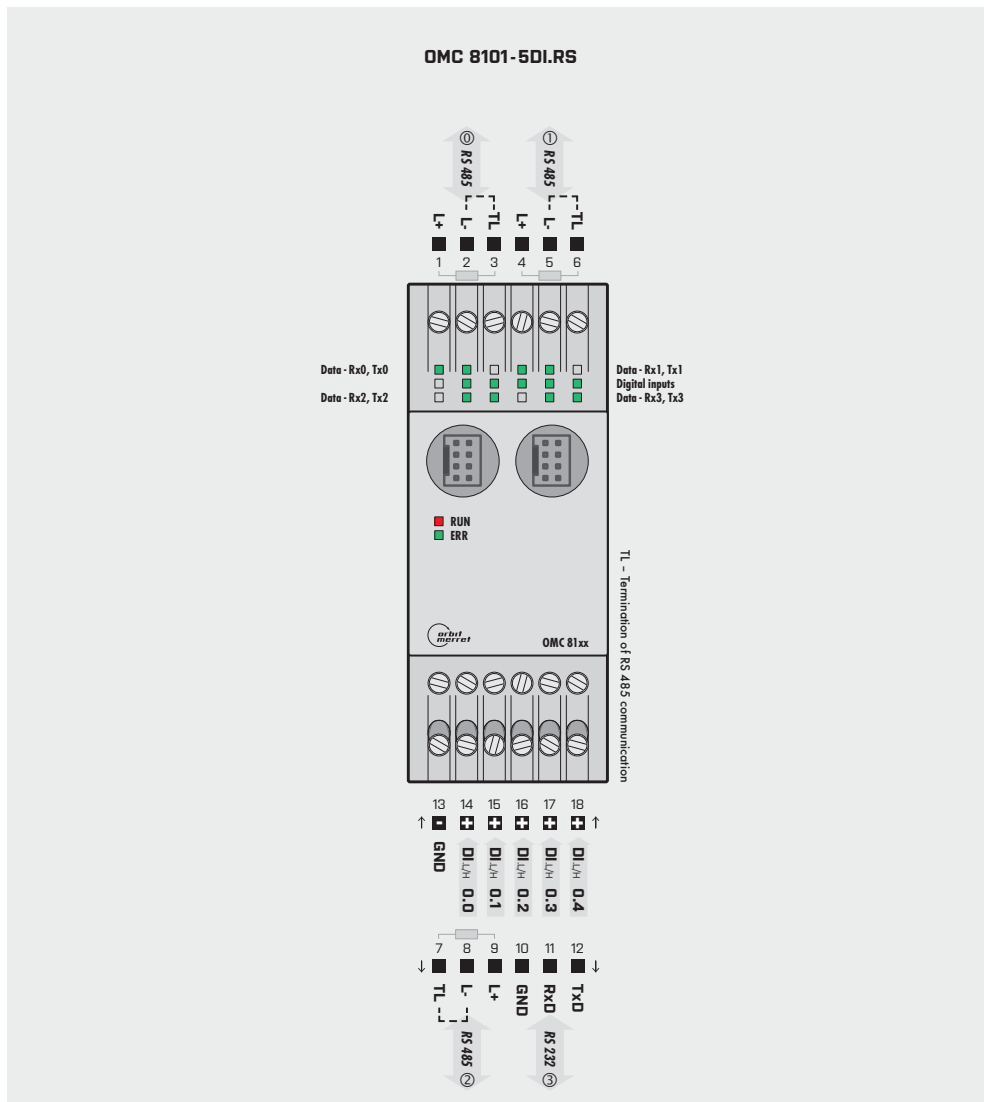
\* PI - Primary isolation, DI - Double isolation

Power supply leads should not be in the vicinity of the low level input signal leads. Contactors, electrical motors and other power devices are not allowed near the input signal leads. Input signal leads (measured value) should be at a safe distance from all power lines and appliances. Even though this device has been successfully tested in accordance with international standards for use in industrial areas, we still recommend to adhere to the afore mentioned simple rules.

If the manufacturer is to assume the warranty conditions provided for the device's proper functionality it is essential that the shielding of the input signal wires is connected to the metal frame of the electrical switchboard!

# OMC 8101-5DI.RS

## CONNECTION



### Connection of digital inputs

